



Coimisiún na Scrúduithe Stáit
State Examinations Commission

Leaving Certificate Examination 2025

Music

Composing

Ordinary Level

Thursday 19 June Afternoon 3:15 - 4:45

100 marks

Examination Number

<input type="text"/>	<input type="text"/>	<input type="text"/>	<input type="text"/>	<input type="text"/>	<input type="text"/>
----------------------	----------------------	----------------------	----------------------	----------------------	----------------------

Date of Birth

<input type="text"/>	<input type="text"/>	/	<input type="text"/>	<input type="text"/>	/	<input type="text"/>	<input type="text"/>
----------------------	----------------------	---	----------------------	----------------------	---	----------------------	----------------------

For example, 3rd February
2005 is entered as 03 02 05

Centre Stamp

Instructions

Write your examination number and Date of Birth in the boxes on the front cover.

There are **two** sections in this examination paper.

Section A	Melody Composition	40 marks	3 questions
Section B	Harmony	60 marks	3 questions

- Answer as follows:
 - one question from Section **A** – Melody Composition

and

 - one question from Section **B** – Harmony
- Write your answers in blue or black pen. You may use pencil for staff notation.
- Write your answers in the spaces provided in this booklet. There is space for extra work/roughwork at the end of the booklet. Label any extra work clearly with the question number and part.
- This examination booklet will be scanned and your work will be presented to an examiner on screen. Anything that you write outside of the answer areas may not be seen by the examiner.

Answer **one** question only in this section:

Question 1 Continuation of a given opening (40 marks)

or

Question 2 Setting music to a given text (40 marks)

or

Question 3 Composing to a given dance rhythm or metre or form (40 marks)

Question 1

(40 marks)

Continuation of a given opening

Answer (a) **and** (b).

- (a)
- Continue the given opening to make an eight-bar melody, ending on the keynote, that is, doh.
 - Add appropriate phrasing and expression marks to the melody.
 - Choose a suitable instrument for your melody from the following list:

- ☐ clarinet
- ☐ violin
- ☐ descant recorder
- ☐ oboe

Moderato

The musical notation shows a given opening in G major (one sharp) and 4/4 time. The melody starts with a forte (*f*) dynamic. The first phrase consists of four quarter notes: G4, A4, B4, and C5, marked with a '1' above the first note. The second phrase consists of four notes: D5, C5, B4, and A4, marked with a '2' above the first note. Below the first staff are three empty staves, each with a treble clef and a key signature of one sharp (F#), for the student to continue the melody.

and

- (b)
- Continue the given opening to make an eight-bar melody, ending on the keynote, that is, doh.
 - Add appropriate phrasing and expression marks to the melody.
 - Choose a suitable instrument for your melody from the following list:

- ☐ clarinet
- ☐ violin
- ☐ descant recorder
- ☐ oboe

Moderato

The musical notation is on a single staff in treble clef, B-flat major (two flats), and 3/4 time. The tempo is marked 'Moderato'. The melody begins with a half note G4 (doh), followed by a quarter note A4, a quarter note Bb4, a quarter note C5, a quarter note Bb4, a quarter note A4, and a half note G4. The first staff is marked with a first ending bracket (1) and a piano (p) dynamic. The second staff is marked with a second ending bracket (2). Below the first staff are three empty staves for continuation.

Question 2

(40 marks)

Setting music to a given text

Answer (a) and (b).

Here is an extract from the poem *Halloween Chills* by Denise M. Cocchiaro.

Heed the whispers straight from hell
To keep you safe from witchy spells
Through this night of devilish play
All who tread will rue the day

- (a) • The first two lines have been set to a rhythm. Compose a rhythm to fit the remaining words.

4/4

1

Heed the whis - pers straight from hell To

2

3

keep_ you safe from_ witch - y spells

4

Through this night of dev - il - ish play

All who tread will rue the day

- (b)
- Using the rhythm that you composed at (a), continue the opening below to make a melody of eight bars.
 - End on the keynote, that is, doh.
 - Write the words under the notes.
 - Add appropriate phrasing and expression marks to the melody.

Moderato

Heed the whis - pers straight from hell To

Question 3

(40 marks)

Composing to a given dance rhythm or metre or form

Answer (a) and (b).

- (a)
- Study this opening of a minuet.
 - Continue the given opening to make an eight-bar melody, ending on the keynote, that is, doh.
 - Add appropriate phrasing and expression marks to the melody.
 - Choose a suitable instrument for your melody from the following list:

- ☐ clarinet
- ☐ violin
- ☐ trumpet
- ☐ flute

Moderato

mp

and

- (b)
- Study this opening of a march.
 - Continue the given opening to make an eight-bar melody, ending on the keynote, that is, doh.
 - Add appropriate phrasing and expression marks to the melody.
 - Choose a suitable instrument for your melody from the following list:

- ☐ clarinet
- ☐ violin
- ☐ trumpet
- ☐ flute

Moderato

1 *mf* 2

Do not write on this page

Answer **one** question only in this section:

Question 4 Composing melody and bass notes from a set of chords at cadence points (60 marks)

or

Question 5 Adding bass notes and chord indications at cadence points (60 marks)

or

Question 6 Adding descant notes and chord indications at cadence points (60 marks)

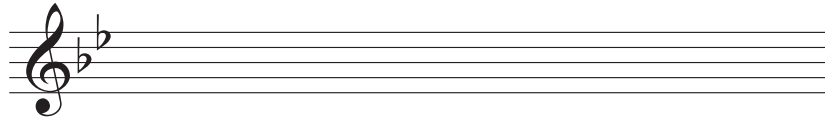
Question 4

(60 marks)

Composing melody and bass notes from a set of chords at cadence points

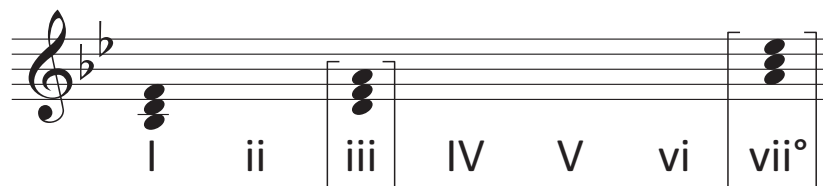
Preparatory work:

- Write out the scale of B♭ major on the stave below.



- Plot the chords available in this key (I, ii, IV, V and vi) either in the chord bank grid or on the stave below. The first chord is given.

Notes of chord	F D B♭		A F D				E♭ C A
Chord symbol	B♭		Dm				A°
Roman numeral	I	ii	iii	IV	V	vi	vii°



- Study the piece of music on the following page.
- Using the given rhythms, add melody and bass notes to complete the cadences and approach chords as follows:
 - At **A**, an imperfect cadence with approach chord (I—IV—V)
 - At **B**, a perfect cadence with approach chord (ii—V—I)
 - At **C**, an interrupted cadence with approach chord (ii—V—vi)
 - At **D**, a plagal cadence with approach chord (vi—IV—I)

Sheet music for a piece in B-flat major, 2/4 time, consisting of four systems (A, B, C, D). Each system contains a treble and bass staff. The key signature has two flats (B-flat and E-flat). The time signature is 2/4.

System A: Treble staff: G4 (quarter), A4-B4 (beamed eighth notes), C5 (quarter). Bass staff: B2 (quarter), C3 (quarter), D3 (half). Above the treble staff, a bracketed sequence shows G4, A4, B4.

System B: Treble staff: C5 (quarter), B4-A4 (beamed eighth notes), G4 (quarter). Bass staff: E2 (quarter), F2 (quarter), G2 (half). Above the treble staff, a bracketed sequence shows G4, A4, B4.

System C: Treble staff: F4 (quarter), G4 (quarter), A4 (half). Bass staff: A2 (quarter), B2 (quarter), C3 (half). Above the treble staff, a bracketed sequence shows G4, A4, B4.

System D: Treble staff: B4 (quarter), C5 (quarter), D5 (half). Bass staff: D2 (quarter), E2 (quarter), F2 (half). Above the treble staff, a bracketed sequence shows G4, A4, B4. The system concludes with a double bar line.

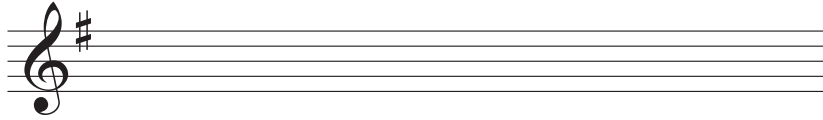
Question 5

(60 marks)

Adding bass notes and chord indications at cadence points

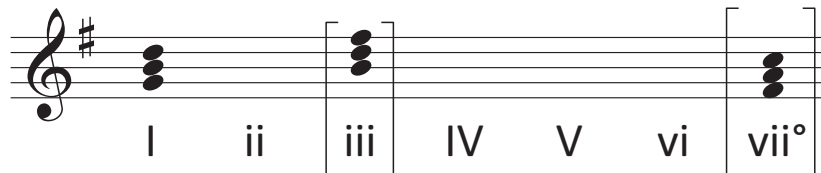
Preparatory work:

- Write out the scale of G major on the staff below.



- Plot the chords available in this key (I, ii, IV, V and vi) either in the chord bank grid or on the staff below. The first chord is given.

Notes of chord	D		F#				C
	B		D				A
	G		B				F#
Chord symbol	G		Bm				F#°
Roman numeral	I	ii	iii	IV	V	vi	vii°



- Study the piece of music on the following page.
- Add suitable bass notes and chord indications to complete the cadences at **A**, **B**, **C** and **D**.
- You may use either chord symbols or Roman numerals, but not both.
- Do not repeat the same chord in adjacent boxes.

A

B

C

D

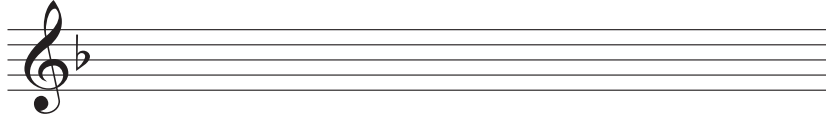
Question 6

(60 marks)

Adding descant notes and chord indications at cadence points

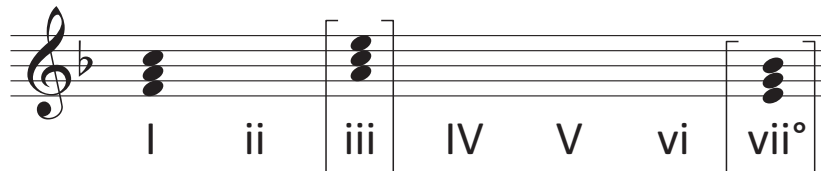
Preparatory work:

- Write out the scale of F major on the staff below.



- Plot the chords available in this key (I, ii, IV, V and vi) either in the chord bank grid or on the staff below. The first chord is given.

Notes of chord	C A F		E C A				B \flat G E
Chord symbol	F		Am				E $^{\circ}$
Roman numeral	I	ii	iii	IV	V	vi	vii $^{\circ}$



- Study the piece of music on the following page.
- Complete the phrase endings by adding suitable chords and descant notes at the cadence points **A**, **B**, **C** and **D**.
- You may use either chord symbols or Roman numerals, but not both.

A

B

C

D

Descant

Melody

Bass

Extra work / Roughwork

This section provides a large area for extra work or roughwork. It consists of ten sets of five horizontal lines each, spaced evenly down the page. The lines are thin and black, providing a guide for writing or drawing.

Do not write on this page

Do not write on this page

Copyright notice

This examination paper may contain text or images for which the State Examinations Commission is not the copyright owner, and which may have been adapted, for the purpose of assessment, without the authors' prior consent. This examination paper has been prepared in accordance with Section 53(5) of the *Copyright and Related Rights Act, 2000*. Any subsequent use for a purpose other than the intended purpose is not authorised. The Commission does not accept liability for any infringement of third-party rights arising from unauthorised distribution or use of this examination paper.

Leaving Certificate – Ordinary Level

Music Composing

Thursday 19 June

Afternoon 3:15 - 4:45