



Coimisiún na Scrúduithe Stáit  
State Examinations Commission

Leaving Certificate Examination 2023

Music

Composing

Ordinary Level

Thursday 22 June Afternoon 3:15 - 4:45

100 marks

Examination Number

<input type="text"/>	<input type="text"/>	<input type="text"/>	<input type="text"/>	<input type="text"/>	<input type="text"/>
----------------------	----------------------	----------------------	----------------------	----------------------	----------------------

Day and Month of Birth

<input type="text"/>	<input type="text"/>	<input type="text"/>	<input type="text"/>
----------------------	----------------------	----------------------	----------------------

For example, 3rd February  
is entered as 0302

Centre Stamp

--

## Instructions

Write your examination number and date of birth in the boxes on the front cover.

There are **two** sections in this examination paper.

Section <b>A</b>	Melody Composition	40 marks	3 questions
Section <b>B</b>	Harmony	60 marks	3 questions

- Answer as follows:
  - one question from Section **A** – Melody Composition

**and**

  - one question from Section **B** – Harmony
- Write your answers in blue or black pen. You may use pencil for staff notation.
- Write your answers in the spaces provided in this booklet. There is space for extra work/roughwork at the end of the booklet. Label any extra work clearly with the question number and part.
- This examination booklet will be scanned and your work will be presented to an examiner on screen. Anything that you write outside of the answer areas may not be seen by the examiner.

Answer **one** question only in this section:

**Question 1** Continuation of a given opening (40 marks)

or

**Question 2** Setting music to a given text (40 marks)

or

**Question 3** Composing to a given dance rhythm or metre or form (40 marks)

**Question 1****(40 marks)****Continuation of a given opening**Answer (a) **and** (b).

- (a)
- Continue the given opening to make an eight-bar melody, ending on the keynote, that is, doh.
  - Add appropriate phrasing and expression marks to the melody.
  - Choose a suitable instrument for your melody from the following list:

☐ descant recorder☐ clarinet☐ violin☐ oboe

**Moderato**

*mp*

and

- (b)
- Continue the given opening to make an eight-bar melody, ending on the keynote, that is, doh.
  - Add appropriate phrasing and expression marks to the melody.
  - Choose a suitable instrument for your melody from the following list:

☐ descant recorder

☐ clarinet

☐ violin

☐ oboe

**Moderato**

1

mf

2

## Question 2

(40 marks)

### Setting music to a given text

Answer (a) and (b).

Here is an extract from the poem *The Star* by Jane Taylor.

In the dark blue sky you keep,  
And often through my curtains peep,  
For you never shut your eye,  
'Till the sun is in the sky.

- (a) • The first two lines have been set to a rhythm. Compose a rhythm to fit the remaining words.

**4/4**

1

2

In the dark blue sky you keep, And

3

4

of - ten through\_ my cur - tains peep,

For you ne - ver shut your eye,

'Till the sun is in the sky.

- (b)
- Using the rhythm that you composed at (a), continue the opening below to make a melody of eight bars.
  - End on the keynote, that is, doh.
  - Write the words under the notes.
  - Add appropriate phrasing and expression marks to the melody.

**Moderato**

*1 mf*

*2*

In the dark blue sky you keep, And



### Question 3

(40 marks)

#### Composing to a given dance rhythm or metre or form

Answer (a) **and** (b).

- (a)
- Study this opening of a march.
  - Continue the given opening to make an eight-bar melody, ending on the keynote, that is, doh.
  - Add appropriate phrasing and expression marks to the melody.
  - Choose a suitable instrument for your melody from the following list:

☐ trumpet

☐ violin

☐ clarinet

☐ oboe

**Moderato**

The musical notation shows a melody in 4/4 time, marked **Moderato** and **f**. The melody begins on G4, moves to A4, B4, C5, and then has a repeat sign. After the repeat, it continues to D5, E5, F5, G5, A5, B5, C6, and ends on D6. There are three empty staves below for continuation.

and

- (b)
- Study this opening of a waltz.
  - Continue the given opening to make an eight-bar melody, ending on the keynote, that is, doh.
  - Add appropriate phrasing and expression marks to the melody.
  - Choose a suitable instrument for your melody from the following list:

☐ trumpet

☐ violin

☐ clarinet

☐ oboe

**Moderato**

*p*

1

2

Do not write on this page

Answer **one** question only in this section:

**Question 4** Composing melody and bass notes from a set of chords at cadence points (60 marks)

or

**Question 5** Adding bass notes and chord indications at cadence points (60 marks)

or

**Question 6** Adding descant notes and chord indications at cadence points (60 marks)

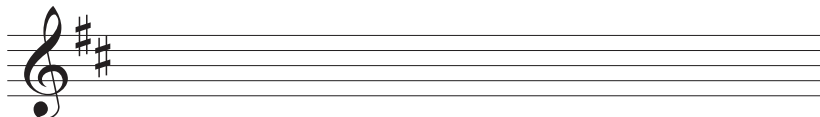
#### Question 4

(60 marks)

#### Composing melody and bass notes from a set of chords at cadence points

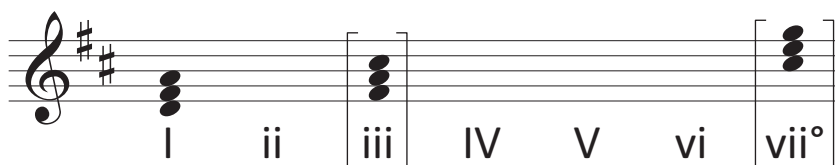
##### Preparatory work:

- Write out the scale of D major on the staff below.



- Plot the chords available in this key (I, ii, IV, V and vi) either in the chord bank grid or on the staff below. The first chord is given.

Notes of chord	A F# D		C# A F#				G E C#
Chord symbol	D		F#m				C#°
Roman numeral	I	ii	iii	IV	V	vi	vii°



- Study the piece of music on the following page.
- Using the given rhythms, add melody and bass notes to complete the cadences and approach chords as follows:
  - At **A**, an imperfect cadence with approach chord (I—IV—V)
  - At **B**, a plagal cadence with approach chord (vi—IV—I)
  - At **C**, an interrupted cadence with approach chord (I—V—vi)
  - At **D**, a perfect cadence with approach chord (ii—V—I)

**A**

**B**

**C**

**D**

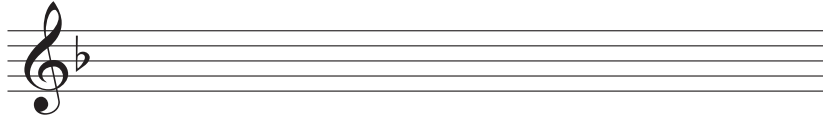
### Question 5

(60 marks)

#### Adding bass notes and chord indications at cadence points

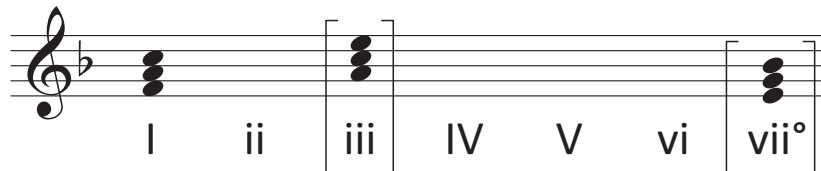
##### Preparatory work:

- Write out the scale of F major on the staff below.



- Plot the chords available in this key (I, ii, IV, V and vi) either in the chord bank grid or on the staff below. The first chord is given.

Notes of chord	C A F		E C A				B $\flat$ G E
Chord symbol	F		Am				E $^{\circ}$
Roman numeral	I	ii	iii	IV	V	vi	vii $^{\circ}$



- Study the piece of music on the following page.
- Add suitable bass notes and chord indications to complete the cadences at **A**, **B**, **C** and **D**.
- You may use either chord symbols or Roman numerals, but not both.
- Do not repeat the same chord in adjacent boxes.

**A**

**B**

**C**

**D**

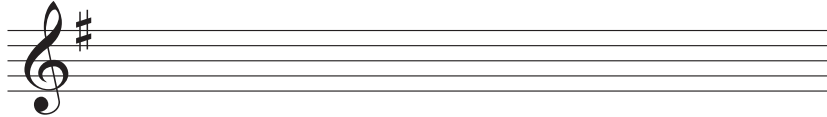
## Question 6

(60 marks)

### Adding descant notes and chord indications at cadence points

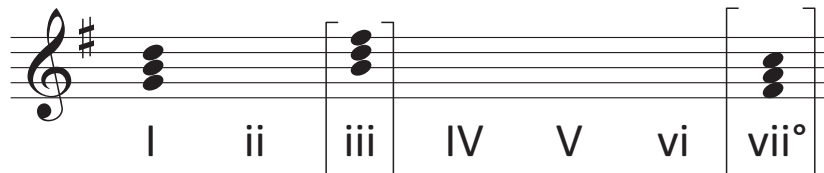
#### Preparatory work:

- Write out the scale of G major on the stave below.



- Plot the chords available in this key (I, ii, IV, V and vi) either in the chord bank grid or on the stave below. The first chord is given.

Notes of chord	D B G		F# D B				C A F#
Chord symbol	G		Bm				F#°
Roman numeral	I	ii	iii	IV	V	vi	vii°



- Study the piece of music on the following page.
- Complete the phrase endings by adding suitable chords and descant notes at **A, B, C** and **D**.
- You may use either chord symbols or Roman numerals, but not both.

**A**

Descant

Melody

Bass

**B**

**C**

**D**

## Extra work / Roughwork

This section provides a large area for extra work or roughwork. It consists of ten sets of five horizontal lines each, spaced evenly down the page. The lines are thin and black, providing a guide for writing.

Do not write on this page

Do not write on this page

**Copyright notice**

This examination paper may contain text or images for which the State Examinations Commission is not the copyright owner, and which may have been adapted, for the purpose of assessment, without the authors' prior consent. This examination paper has been prepared in accordance with *Section 53(5) of the Copyright and Related Rights Act, 2000*. Any subsequent use for a purpose other than the intended purpose is not authorised. The Commission does not accept liability for any infringement of third-party rights arising from unauthorised distribution or use of this examination paper.

Leaving Certificate – Ordinary Level

## Music Composing

Thursday 22 June

Afternoon 3:15 - 4:45



Coimisiún na Scrúduithe Stáit  
State Examinations Commission

Leaving Certificate Examination 2023

Music

Listening

Ordinary Level

Thursday 22 June Afternoon 1:30 - 3:00

100 marks

Examination Number

<input type="text"/>	<input type="text"/>	<input type="text"/>	<input type="text"/>	<input type="text"/>	<input type="text"/>
----------------------	----------------------	----------------------	----------------------	----------------------	----------------------

Day and Month of Birth

<input type="text"/>	<input type="text"/>	<input type="text"/>	<input type="text"/>
----------------------	----------------------	----------------------	----------------------

For example, 3rd February  
is entered as 0302

Centre Stamp

--

## Instructions

Write your examination number and date of birth in the boxes on the front cover.

There are **six** questions in this examination paper. Answer all questions.

- Write your answers in blue or black pen. You may use pencil for staff notation.
- Write your answers in the spaces provided in this booklet. There is space for extra work / roughwork at the end of the booklet. Label any such extra work clearly with the question number and part.
- Before the examination begins, listen carefully to the test excerpt. If you cannot hear the recording clearly, inform the Superintendent immediately.
- This examination booklet will be scanned and your work will be presented to an examiner on screen. Anything that you write outside of the answer areas may not be seen by the examiner.
- There will be suitable pauses throughout for you to read and answer questions.

## Question 1

(25 marks)

Five excerpts from *Bohemian Rhapsody* by Freddie Mercury.

- Answer the questions on each excerpt.

### Excerpt 1, played three times.

(a) The voices in this excerpt are singing

☐ in unison

☐ in harmony

(b) The music in this excerpt features

☐ repeated notes

☐ octave leaps

### Excerpt 2, played three times.

(c) Name a recording technique used in this excerpt.

Recording technique:

(d) Name one instrument which plays the accompaniment in the excerpt.

Answer:

*This question continues on the next page.*

**Excerpt 3, played three times. The lyrics are printed below.**

- Line 1      Mama, just killed a man,  
Line 2      Put a gun against his head, pulled my trigger, now he's dead.  
Line 3      Mama, life had just begun,  
Line 4      But now I've gone and thrown it all away.

**(e)** Circle the word in line 3 where the highest note is sung.

**(f)** The drum kit enters for the first time in line 4 at the word

- ☐ now  
☐ thrown  
☐ away

**Excerpt 3, played once more and Excerpt 4, played three times.**

**(g)** Describe one difference between the music in **Excerpt 3** and the music in **Excerpt 4**.  
Refer to both excerpts in your answer.

Difference:	
Excerpt 3	Excerpt 4

**Excerpt 5, played three times.**

- (h)** Identify one feature of the guitar music in this excerpt.

Feature:

## Question 2

(10 marks)

Two excerpts from *Romeo and Juliet Fantasy Overture* by Tchaikovsky.

- Answer the questions on each excerpt.

**Excerpt 1, played three times.**

**(a)** The music in this excerpt is taken from the

- ☐ introduction
- ☐ development
- ☐ coda

**(b)** The theme heard in this excerpt is the

- ☐ Love theme
- ☐ Strife theme
- ☐ Friar Lawrence theme

**(c)** An instrument playing the theme in this excerpt is the

- ☐ cello
- ☐ trumpet
- ☐ flute

**Excerpt 2, played three times.**

**(d)** Identify the two families of instruments playing in this excerpt.

1st Family:

2nd Family:

**(e)** Towards the end of the excerpt the music

- ☐ gets louder
- ☐ gets softer
- ☐ gets slower

### Question 3

(10 marks)

An excerpt from *Piano Quartet No.1* by Gerald Barry, will be played three times.

- Answer the following questions.

- (a) Identify the instrument playing in this excerpt.

Instrument:

- (b) The other three instruments that play in *Piano Quartet No.1* by Gerald Barry are

Instrument 1:

Instrument 2:

Instrument 3:

- (c) The texture of the music in this excerpt is

- ☐ monophonic  
☐ polyphonic  
☐ homophonic

- (d) Identify one feature of 20th century music in this excerpt.

Feature:

- (e) Describe one difference between the music heard in this excerpt and the music which immediately follows this excerpt in *Piano Quartet No.1* by Gerald Barry.

Difference:

#### Question 4

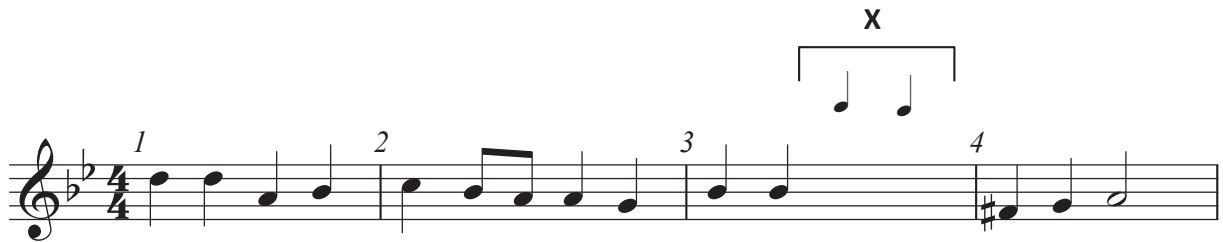
(10 marks)

Two excerpts from Cantata *Jesu, der du meine Seele* by J.S. Bach.

- Answer the questions on each excerpt.

##### Excerpt 1, played three times.

An outline score of the opening four bars of the excerpt is printed below.



(a) Insert the **two** missing notes at **X** on the score. Use the given rhythm.

(b) This excerpt is taken from

- ☐ an aria
- ☐ a recitative
- ☐ a chorale

(c) This excerpt ends with

- ☐ a perfect cadence
- ☐ an imperfect cadence
- ☐ a plagal cadence

**Excerpt 2, played three times.**

- (d)** Identify two instruments which play in this excerpt.

Instrument 1:
---------------

Instrument 2:
---------------

**Excerpt 1 and Excerpt 2 once more.**

- (e)** Describe one similarity **or** one difference between the music in **Excerpt 1** and the music in **Excerpt 2**.

Similarity:

**OR**

Difference:

## Question 5

(25 marks)

### Irish Music

You will hear three excerpts, each played three times.

- Answer the questions on each excerpt.

#### Excerpt 1.

(a) The instrument playing in this excerpt is the

- ☐ guitar
- ☐ harp
- ☐ harpsichord

(b) The music in this excerpt features

- ☐ a flattened 7th
- ☐ a gap scale
- ☐ ornamentation

(c) The form of the music in this excerpt is

- ☐ ABBA
- ☐ AABB
- ☐ ABAB

**Excerpt 2.**

**(d)** (i) The dance heard in this excerpt is

a reel

☐

a jig

☐

a hornpipe

☐

(ii) The time signature of this dance is

$\frac{3}{4}$

☐

$\frac{4}{4}$

☐

$\frac{6}{8}$

☐

(iii) A typical bar of rhythm associated with this dance is



**(e)** Name one instrument which plays the melody in this excerpt.

Instrument:

**Excerpt 3.**

**(f)** Identify one feature of sean nós singing as heard in this excerpt.

Feature:

**(g)** Describe one feature of the instrumental accompaniment heard in this excerpt.

Feature:

## Question 6

(20 marks)

### Aural Skills

This question is based on five excerpts of music.

- Answer the questions on each excerpt.

#### Excerpt 1, played three times.

(a) How many full bars of music are heard in the introduction, before the vocalist enters?

☐ 3 bars

☐ 4 bars

☐ 6 bars

(b) In this excerpt the piano plays

☐ block chords

☐ arpeggios

☐ sustained notes

**Excerpt 2, played three times.**

- The lyrics are printed below.

Line 1 I never thought I'd miss you  
Line 2 Half as much as I do.  
Line 3 And I never thought I'd feel this way  
Line 4 The way I feel about you.  
Line 5 As soon as I wake up, every night every day.  
Line 6 I know that it's you I need to take the blues away.

**(c)** A feature of the vocal music heard in lines 1–4 is

- ☐ repeated notes
- ☐ syncopation
- ☐ octave leap

**(d)** Name one instrument (other than piano) heard playing in lines 5–6.

Instrument:

**(e)** The piano music at the end of line 6 features

- ☐ rising notes
- ☐ falling notes
- ☐ rising and falling notes

*This question continues on the next page.*

**Excerpt 3, played three times.**

**(f)** The instrument playing the melody at the start of the excerpt is the

- ☐ oboe
- ☐ trumpet
- ☐ harp

**(g)** Name another instrument heard playing in this excerpt.

Answer:

**Excerpt 4, played three times. An outline score is printed below.**

The musical score for Excerpt 4 is written on two staves in treble clef with a key signature of three sharps (F#, C#, G#) and a 2/4 time signature. The first staff contains measures 1 through 4. Measure 1 starts with a quarter rest, followed by a quarter note on G4. Measure 2 has a quarter note on A4. Measure 3 has a quarter note on B4. Measure 4 has a quarter note on C5. A bracket labeled 'X' spans measures 3 and 4. The second staff contains measures 5 through 7. Measure 5 has a quarter note on B4. Measure 6 has a quarter note on A4. Measure 7 has a quarter note on G4.

**(h)** The missing notes at **X** on the score are

- ☐
- ☐
- ☐

**Excerpt 5, played three times.**

- (i) From your prescribed works, select the work which most closely resembles the music heard in this excerpt. Give a reason for your choice.

Prescribed work:
Reason:

**You have three minutes to complete the examination paper.**



Do not write on this page

Do not write on this page

**Copyright notice**

This examination paper may contain text or images for which the State Examinations Commission is not the copyright owner, and which may have been adapted, for the purpose of assessment, without the authors' prior consent. This examination paper has been prepared in accordance with *Section 53(5) of the Copyright and Related Rights Act, 2000*. Any subsequent use for a purpose other than the intended purpose is not authorised. The Commission does not accept liability for any infringement of third-party rights arising from unauthorised distribution or use of this examination paper.

Leaving Certificate – Ordinary Level

## Music Listening

Thursday 22 June

Afternoon 1:30 - 3:00