

**NATIONAL  
SENIOR CERTIFICATE**

**GRADE 10**

**NOVEMBER 2018**

**MATHEMATICAL LITERACY P1**

**MARKS:** 75

**TIME:** 1½ hours

---

This question paper consists of 9 pages.

---

**INSTRUCTIONS AND INFORMATION**

1. This question paper consists of FIVE questions.
2. Answer ALL the questions.
3. Number the questions correctly according to the numbering system used in this question paper.
4. Diagrams are NOT necessarily drawn to scale.
5. Round off ALL the final answers appropriately according to the context used, unless stated otherwise.
6. Indicate units of measurement, where applicable.
7. Start EACH question on a NEW page.
8. Show ALL calculations clearly.
9. Write neatly and legibly.

**QUESTION 1**

1.1 Decoform furniture factory shop is having a birthday sale. Mr Dlamini wants to buy a TV plasma unit to the value of R499,00 using the cash option. All prices are value added tax (VAT) inclusive.

Study the payment options in TABLE 1 below and answer the questions that follow.

**TABLE 1: PAYMENT OPTIONS**

<b>CASH OPTION</b>	<b>LAY-BYE OPTION</b>
Television plasma unit (120 cm)	Television plasma unit (120 cm)
Price: R499,00	Price: R499,00
Discount: 10%	Deposit: 15%
VAT inclusive	6 equal monthly instalments
VAT 15%	<b>NB.: No discount on lay-bye items</b>

- 1.1.1 Write down the cash price. (2)
- 1.1.2 Calculate the total cost price for the TV plasma unit (cash option). (2)
- 1.1.3 Determine the original price of the TV plasma unit before VAT was added. Give your final answer to the nearest whole number. (3)
- 1.1.4 Calculate the deposit amount for the lay-bye option. (2)
- 1.1.5 Write down the length size of the television plasma unit in metres. (2)
- 1.2 Explain the term *discrete data*. (2)
- 1.3 The numeric scale for a kitchen plan is given as 1 : 100. Explain what the scale 1 : 100 means. (2)

**[15]**

**QUESTION 2**

- 2.1 Study TABLE 2 below regarding the increase in the petrol price and answer the questions that follow.

**TABLE 2**

UNLEADED PETROL ON THE COAST PER LITRE	PRICE
2018, January 3	R13,93
2018, February 7	R13,63
2018, March 7	R13,27
2018, April 4	R13,89
2018, May 2	R14,38
2018, June 6	R15,20
2018, July 4	R15,43

[Source: <http://www.sapia.org.za>]

- 2.1.1 Write down the price of petrol on 7 March 2018. (2)
- 2.1.2 Calculate the percentage change in the price of petrol between 7 March and 4 April 2018. Use the formula below: (3)

$$\% \text{ change} = \frac{\text{New price} - \text{Old Price}}{\text{Old Price}} \times 100\%$$

- 2.2 Lerato sees that Vodolite has a new price plan for prepaid phones only, available until 30 November 2018. The rates applicable to this price plan are set out in TABLE 3 out below. She likes the plan and decides to sign up.

**TABLE 3**

USAGE	COST
Local call (any network any time)	90 cents per minute (bill per second)
SMS	80 cents per SMS all day
MMS (300 KB or less)	R1,20 per MMS
International SMS	R1,95 per SMS all day

Use TABLE 3 above to answer the questions.

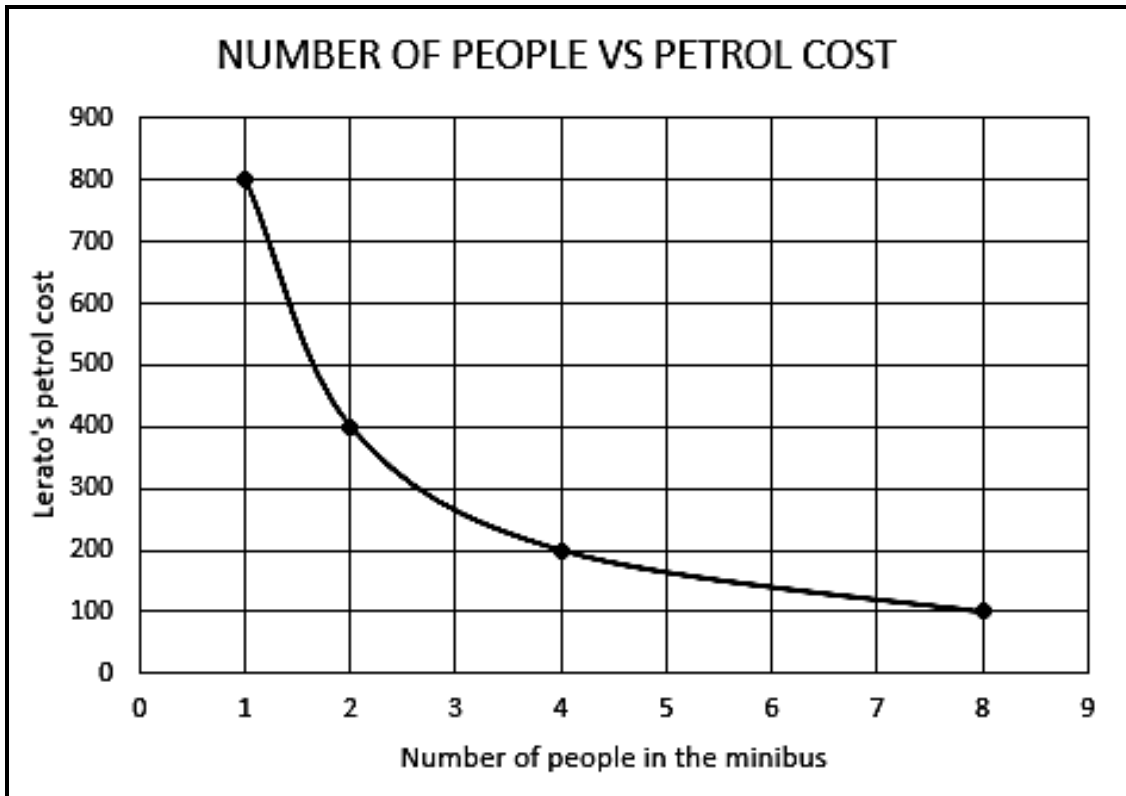
- 2.2.1 During the month of November, Lerato sends one SMS per day to relatives. Calculate how much this activity costs her in rands. (2)
- 2.2.2 Lerato spends 2 hours 30 minutes talking to her relatives during the month. Calculate how much this costs her. (Assume that there are 30 days in the month.) (4)
- 2.2.3 Calculate Lerato's daily cellphone cost for calls in rands. (2)

2.3 Mandy and Joshua work together on Market Day at their school. They split their profit according to the ratio 2 : 3 respectively. They make a profit of R500.

Calculate the amount Mandy will receive. (2)

2.4 Lerato is planning to go on holiday in a minibus. She estimates that petrol will cost her R800 to get to her destination.

The graph below outlines the relationship between the amount of money that Lerato will have to pay for petrol, and the number of people travelling in the minibus.



Use the graph above to answer the questions.

2.4.1 Determine how much it will cost Lerato if 4 people travel with her in the minibus. (2)

2.4.2 Determine the number of people travelling with her in the minibus, if Lerato uses R400 for her petrol. (2)

2.4.3 Calculate how much the petrol cost will be if 9 people travel in the minibus. (2)

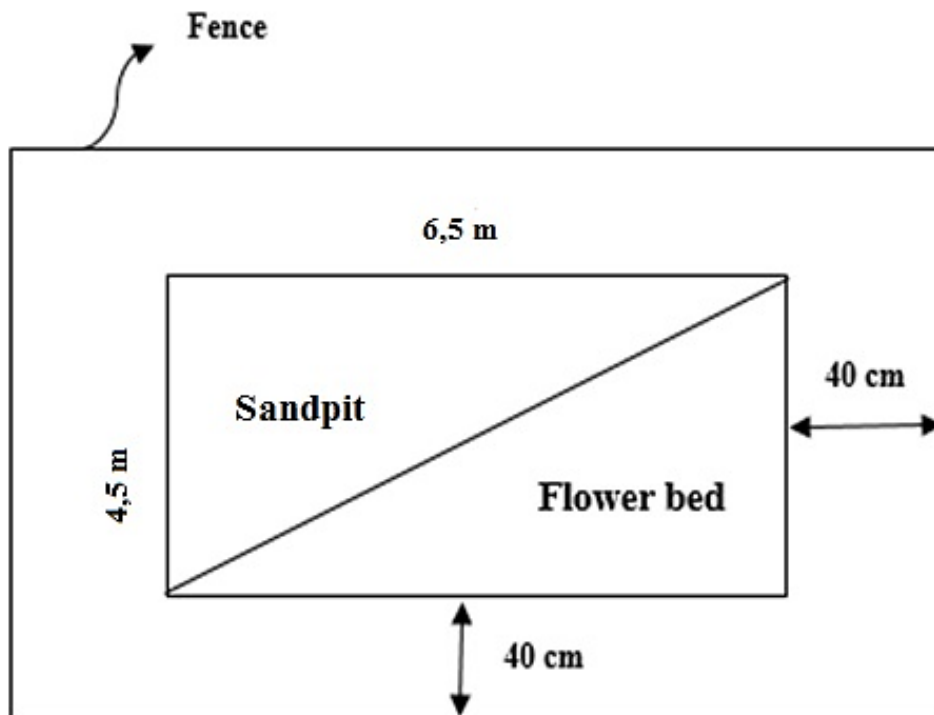
[21]

## QUESTION 3

- 3.1 Lerato invites her relatives to spend a weekend at her home. She decides to make pancakes for breakfast. The following recipe serves 10 persons. Lerato would like to serve 15 persons. Use the information in the recipe to answer the questions.

PANCAKES	
Ingredients	
0,25 kg cake flour	
2 eggs	
500 ml water	
5 ml salt	

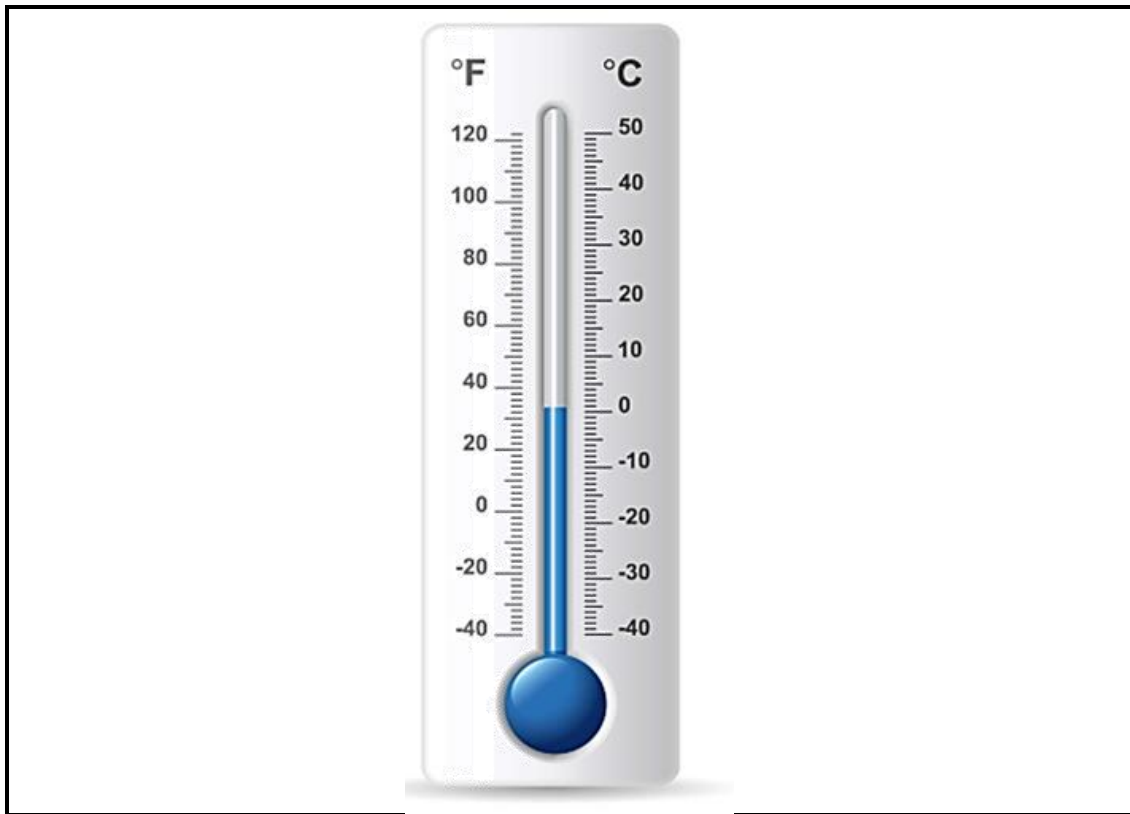
- 3.1.1 Write down, in the simplest form, the number of people the recipe serves as a ratio to the number of people Lerato would like to serve. (2)
- 3.1.2 How much salt and water does Lerato need to make pancakes for 15 people? (2)
- 3.1.3 Determine the amount (in grams) of cake flour Lerato will need to make pancakes for 15 people. (2)
- 3.2 Allison is feeling creative. She is going to divide a patch of ground into a sandpit for her children to play in, and a flower bed which will look pretty. The patch of ground is 6,5 m wide and 4,5 m long from front to back.



She needs to fence the whole area off to prevent the dogs from digging it up. **She will leave a 40 cm border on all sides.** Calculate in metres length of fencing she needs to enclose the entire perimeter. You may use the following formula:

$$\text{Perimeter} = 2 \times \text{length} + 2 \times \text{breadth} \quad (4)$$

3.3 Study the thermometer below and answer the questions.



[Source: [holdthesulfites.com](http://holdthesulfites.com)]

- 3.3.1 If a patient’s temperature reading is 32 °C, write down what you estimate that the temperature will be in degrees Fahrenheit. (2)
- 3.3.2 Show your accuracy by using the following formula to calculate the exact temperature. Round off the final answer to the nearest whole number.

$$^{\circ}\text{F} = \frac{9}{5} \times ^{\circ}\text{C} + 32^{\circ} \tag{3}$$

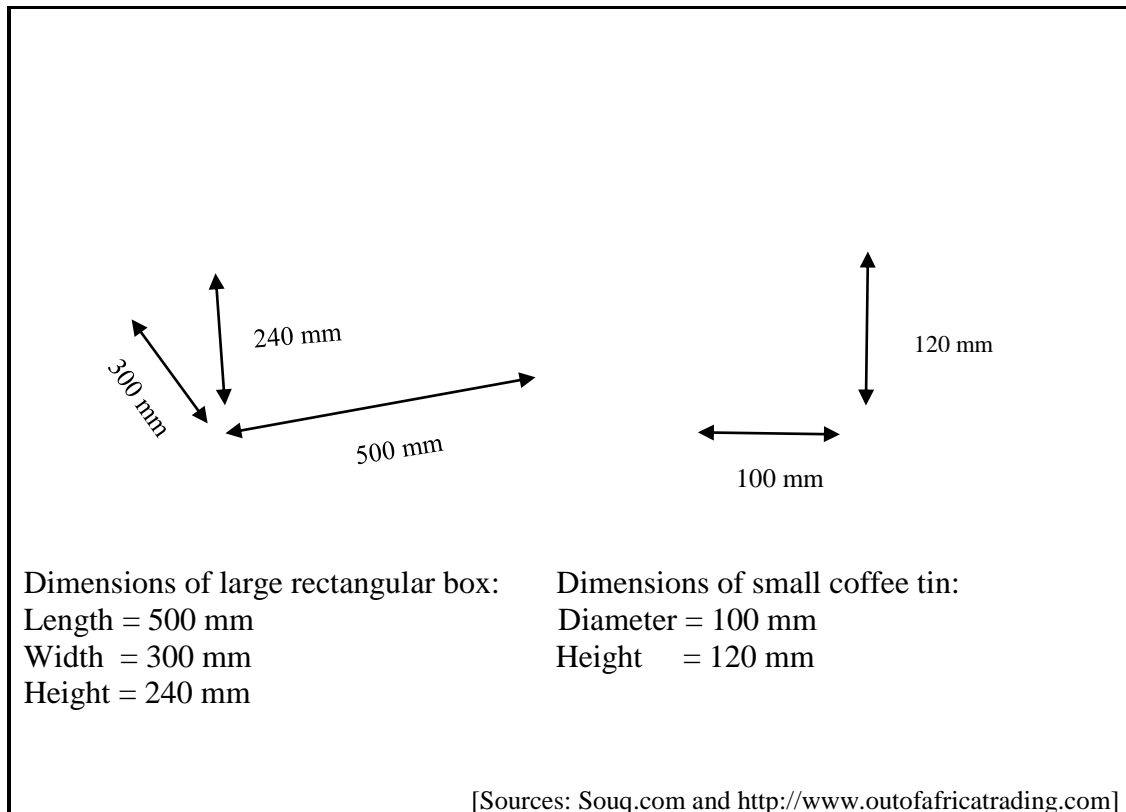
[15]

## QUESTION 4

4.1 The distance between Kuils River and Beaufort West is 15 cm on a map.

Determine the real distance (in km) between the two towns if the scale on the map is 1 : 3 750 000. (3)

4.2 A tin of Nestlè coffee has a diameter of 100 mm and a height of 120 mm. A cardboard box is 500 mm long, 300 mm wide and 240 mm high. Study the diagrams below and answer the questions.



Determine the maximum number of tins that can be packed in the cardboard box. (5)  
[8]

**QUESTION 5**

- 5.1 The body mass (in kg) for each member of the under 17 rugby team from Fundakahle High School is recorded in the table below.

Refer to the information and answer the questions that follow.

47	55	53	58	51	60	58	46
55	44	55	50	62	49	52	64

- 5.1.1 Write down the mode for the U-17 rugby team. (2)
- 5.1.2 Define the term *mean*. (2)
- 5.1.3 Calculate the median for the U-17 rugby team. (3)
- 5.1.4 Determine the range of body mass for U-17 rugby team. (2)
- 5.2 A survey was done at Fundakahle High School to determine the number of boys and girls who actually enjoy reading. The results are provided in TABLE 6 below. Study the table and answer the questions that follow.

**TABLE 6: SURVEY RESULTS**

	Enjoy reading	Do not enjoy reading	TOTAL
Boys	<b>A</b>	212	327
Girls	372	101	473
TOTAL	487	<b>B</b>	800

- Determine the missing values **A** and **B** in the table above. (4)
- 5.3 Determine the probability of a girl being selected by means of random selection. Write your final answer as a percentage of random selection. (3)

**[16]**

**TOTAL: 75**